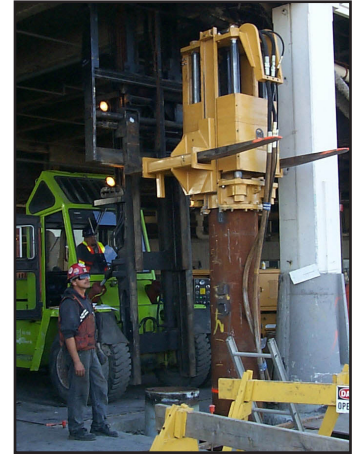


APE Model 7.5c Low Headroom Hydraulic Impact Hammer with an APE Model 260 Power Unit

Designed for super low headroom applications.

Specifications:

	7.5c Low Headroom
Ram weight:	3,446 kg (7,600 lb)
Maximum stroke:	61 cm (24 in)
Rated energy @ maximum stroke:	20.6 kNm (15,200 ft-lb)
Blow rate:	40-75 per minute
Minimum energy @ minimum stroke:	3.3 kNm (2,500 ft-lb)
Minimum stroke:	10 cm (4 in)
Weight of hammer with pipe insert:	5,714 kg (12,600 lb)
Complete operating length with optional draive base and insert:	274 cm (108 in)
Standard lead size:	8 x 21 in box lead
Hydraulic hose length:	30 m (100 ft)



7.5c Shown with forlift.

APE's direct drive technology with optional hammer cushion applications increases versatility.

SPECIFICATIONS:

Model 260 Power Unit

Engine:	Caterpillar C7 ACERT Tier III
Power:	184 kW (250 hp)
Fuel consumption@2100 rpm:	52.4 l/hr (13.8 g/hr)
Fuel consumption@1600 rpm:	47.4 l/hr (12.5 g/hr)
Fuel capacity:	323 liters (85 gal.)
Operating speed:	2100 rpm
Drive pressure:	326 bar (4800 psi)
Drive flow:	300 lpm (0-74 gpm)
Clamp pressure:	306 bar (4,500 psi)
Clamp flow:	28 lpm (6 gpm)
Weight:	3,084 kg (6,800 lbs)
Length:	259 cm (102 in)
Width:	127 cm (50 in)
Height:	152 cm (60 in)

Oversized heat exchanger for temperatures -40c to 51c (-40f to 123f).

Eyes for three point picks.

Reservoir clean out cover.



Easy lift off doors.

Sub base fuel tank.

Optional digital Radio Control.

Advanced, profit generating features that are years ahead of the competition:

- * *Front riding, box leader and excavator mounting available.*
- * *One piece helical gear/eccentric eliminates keyways, pins, splines, and bolts inside the gearbox.*
- * *Computer designed cylinder is perfectly balanced with flow characteristics on the market.*
- * *Heavy duty cylinder is eliminates o-rings and bolt-on guards.*
- * *Power unit comes standard with tool kit and dual controls on pendant and control panel.*
- * *Very simple open loop hydraulic system with highest quality valves with lighted indicators.*
- * *Variable flow in both directions for use on drills, winches and other special attachments.*
- * *Oversized radiator and hydraulic oil cooler with proven performance in the heat of Saudi Arabia.*



Corporate Offices:
 7032 South 196th
 Kent, Washington 98032 USA
 (800) 248-8498 & (253) 872-0141 Fax (253) 872-8710

Visit our WEB site:
www.apevibro.com
 e-mail: ape@apevibro.com

Specifications are subject to change without prio notice 10/08